



Spock © NJ Wight

Annual Report **2017**



Fauna

a chimpanzee sanctuary • un sanctuaire de chimpanzé

Employees

The latter half of this year was rough for Fauna staff and we endeavor to provide support both in good times and not so good times. To do this throughout the year we held workshops to learn about grief, compassion fatigue, and holistic communication. We have a volunteer who has offered yoga classes two times a month.

Board of Directors

Gloria Grow
Mary Lee Jensvold, Ph.D
Dawna Grow
Richard Allan, DVM
Patrick Ring
Ken McAuslan

Advisory Board

Deborah Fouts
Roger Fouts, Ph.D
Diane Frank, DVM
Jane Goodall, Ph.D
Shirley McGreal, EdD
John Mulcahy
Michael Seres
Tony Smith

Operations

Wayne McKellar

Nature Reserve

Ken McAuslan

Chef for Primates

Trevor Laroche

Animal Care

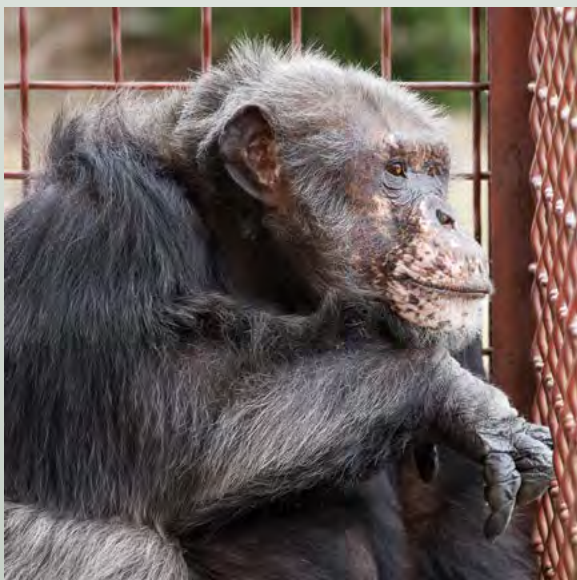
Laurence Levesque, Supervisor/Caregiver
Tanya Barr, Supervisor/Caregiver/Enrichment
Kaeley Sullins, Lead Caregiver/FOW Interpreter ASL
Glee Larson, Lead Caregiver/FOW Interpreter ASL
Catherine Brodeur, Caregiver
Mike Lareau, Farm Caregiver
Claude Desrochers, Caregiver
Jeff Bandy, Caregiver/FOW Interpreter ASL
Matthew De Vries, Caregiver/Enrichment/Assistant Volunteer Coordinator
Pam Lareau, Housekeeping

Fauna Office Staff

Trina McKellar, Office Manager/ Veterinary Technician
Sarah Bresinger, Receptionist
Lindsay Towns, Health & Nutrition Coordinator/Animal Care

Gardens and Grounds

Chantal Desharnais, Supervisor
Pascale Priminani, Assistant Supervisor
Benjamin Desharnais
Benoit Berard
Joanie L'Heureux



Spock © NJ Wight

About the Cover Photo

Spock

NJ Wight, volunteer photographer

Spock was a wonderful and kind soul. Looking at him with his glorious freckles, you could not help but smile. The cover photo of Spock was taken on April 10, 2013. I was fortunate to take photos of Spock for almost 6 years, but the images he allowed me to make this particular day remain some of my very favourites of him. It was a lovely spring day and he was outside with Binky and Maya. Maya was lounging quietly on the island boardwalks, but Binky was full of beans that day! He was very energetic and having a great time playing on the swing in the outside enclosure and making a ruckus. (You can actually see a photo of him from this same day on our Internship Page on the website—swinging upside down.) Spock remained very calm watching what was his friends were up to and he seemed quite content to just sit quietly looking out at the forest beside the island. He would occasionally turn and watch what I was doing, but he seemed very serene in his world on this particular day. It was wonderful to see. Thank you for spending those quiet moments with me Spock.



Lowell © NJ Wright

"Life is a series of natural and spontaneous changes.

Don't resist them—that only creates sorrow.

Let reality be reality.

Let things flow naturally forward in whatever way they like."

—Tao Tzu

Dearest Friends,

Another year has passed and we have so much to share with you. It is also the time of year we love to pause and say **thank you.**

We can't tell you enough how thankful we are for your friendship. Your support has been such a comfort to us as we pass through these deeply sad and difficult months.

Losing Theo, Toby and Spock, and some other friends from our farm family within months of one another has been so painful for everyone.

When shadows filled our view and we felt the world was falling apart you were there for us. Your outpouring of love, kindness and empathy helped us rediscover our strength and is helping us stand up to the tests of life. There are days when we can barely get out of bed to face the day but knowing there are people like you standing behind us providing love and support makes all the difference.

We don't know how we could continue to pass through these challenging moments in life without your endless acts of kindness. From your sweet words of encouragement to the generosity you show us in your most appreciated donations. You are an inspiration to us in so many ways and not a day passes where we are not fully aware of our abundance of blessings and knowing you are there for us and care so deeply. We are deeply grateful for you and the hope you continue to bring into our lives. We are grateful for your precious and deeply cherished gift of friendship. Your love and support makes sense of our past, brings us peace for today and helps us create a vision for tomorrow.

Our vision for the year ahead is to live each day in the present, enjoy the moment, be grateful for the time we have with our cherished residents, and make their lives as comfortable as possible. To ensure this we are implementing practices that will make medical care easier and fun! For example when someone

has an injury we try to take away the fear of medication, cleansing sprays and attention to the injured body part. Make it fun to open your mouth for a look and see. Make it fun to exercise!!!! Make giving a urine sample simple. This and so much more, there are so many things in a day we need to do to help our residents, little tests and treatments, that make their lives better and give us insights into their health and well being. When they cooperate and have fun with us everything is better.

This takes time and an abundance of patience. It also costs a lot of money! This aspect is training the chimps to comply with medical procedures using a technique called positive reinforcement training.

At the same time, a positive experience for the chimpanzees is wholly dependent on well trained staff who take the chimpanzees, monkeys, and farm animals on their own terms. Staff use species-typical behaviors, and have empathy, respect, and compassion in their attitude and interactions with our residents and each other. We have worked on this in the last year and will continue to develop it.

This is essential for our residents as our ultimate goal is to give them a life worth living. They deserve that and it is because of you we can give them something to make up for the pain and suffering they have endured and being misplaced on this planet.

Above all we want to continue educating staff, volunteers, students, and the public for that is the only way we can envision a better brighter future for all captive beings.

Thank you for every act of kindness you have shown us, and please know that you have truly made a difference in the lives of such gentle souls. Those we have loved and lost will remain in our hearts forever and so will you dearest friends.

*With deepest gratitude and respect,
Gloria and Your Friends at Fauna xo*

Gloria

Thank you for being there for us all year long.

Thank you to new friends for choosing the Chimps of Fauna to support.

Thank you all for who you are.

Thank you for all you share.

Thank you for your love and

thank you for your care but most of all, thank you for keeping us so close to your hearts.

Spock Memories

Gloria Grow

Getting to know Spock over the past 11 years was truly a blessing and as I try to reflect on the reasons why this gentle fellow has left such an emptiness in our hearts I can only say it was because he touched so many hearts himself.

Spock was deeply loved by his own family Sophie and Maya he had been with them from the time he was an infant. His ability to make friends so easily and his gentle nature made him someone everyone wanted to be with.

When he moved to Fauna from the zoo in 2007 one of the first friendships he made was with dear Tom. When Spock and Tom were together it was magical as though they were brothers from another time. They had an uncanny resemblance to one another both in looks and personality. Tom adored his new friend and really seemed to appreciate the respect and kindness Spock showed him. These fellows had the greatest time together and because they were so close it made it easier for Binky to join their "boys club". Binky is not an easy fellow sometimes but somehow Tom and Spock together could handle the antics of one of Fauna's youngest residents. After Tom passed away it was Spock who stepped up and took care of Binky. Although as the years passed by and Spock developed his heart condition he obviously found it harder and harder to be with Binky and all the energy this guy has.

We cannot forget Jethro and how much he loved Spock. Jethro is the youngest of the Fauna family and it was so important for him to have a guy like Spock in his life especially after losing Tommy and then Yoko.

Spock was loving, kind and incredibly loyal to his friends and family. He was so reliable we could always count on him trying his best in any relationship. He had a gift and he used it well touching the hearts of his Fauna Family.

Over the years there have not been many of the male chimpanzees here at Fauna that have been able to live with Sue Ellen for any length of time with the exception of Spock and now Loulis. He was mindful of her needs, cautious and sensitive to her disabilities (hip injury from years ago). He was a gentleman around her and showed tremendous restraint and respect.



Spock © NJ Wright

Spock and Sue Ellen were the ones to welcome Tatu and Loulis to Fauna, and he very quickly became their friend in his true Spock manner. His ability to move from one group to the next, to spend some days with Maya, Petra and Jethro or to go for a visit with Tatu, Lou and Sue for a few hours then back to his private space are some of the reasons this loving and gentle soul will be so dearly missed.

Spock was charming, charismatic, intelligent, social, emotional and conscious the words we humans would use to describe a fellow like him. But to his family he was a wonderful, kind, loving and loyal friend.

Forever in our hearts you will stay,

By Laurence Levesque

This great soul who left us... Spock was the perfect blend of strong man with a tender heart! His eyes bright, his gentleness, his enthusiasm for the little things in life around him, his little kicks in the cage to invite us to the race, his sweet little kisses, his vocalization of goodbye when we left the CH at the end of the day... I miss everything about Spock! Every day I miss him terribly.

I send him love in this new life without pain, and in the jungle with his friends! Watch over those who remain my Spocko! I love you very much.

By Tanya Barr

Spock loved our skywalks. Most mornings I am the first to arrive and before I even park my car by the Chimphouse I could sense him looking at me. Sure enough, I'd look up, and he'd be sticking his chubby foot in and out of the skywalk trying to get me to play chase. Sometimes he had a bowl with him and he would pretend throw it at me almost as if to say "hey it's breakfast time what took you so long!"

One of our tunnels goes down towards the pond, ends in a loop, and overlooks the property. Spock loved hanging out down there, often times all by himself. It was his own escape, I think, from everyone when he wanted some alone time. I would always wander down to pester him and make sure he didn't need something though. Some of my most precious one on one moments with Spock were at the end of that tunnel. Trying to serve him in the most awkward positions or play chase from beneath him. Now



Baby Spock (left) & Sophie

when I drive up all alone I still peak down at the end of that tunnel and I swear I can see him there waiting for me.

By Claude Desrochers

Spock was very special to me because he was one of the first chimps that I had the chance to interact with as a caregiver. I will always remember him spending his time in the front room and being his playful and happy self. A real joker, you always knew that he was around because he would rattle objects on the caging to get our attention. Although I wouldn't have thought that at the time, I have come to miss that rattling sound very much. Rest in peace my beautiful freckled-faced friend.

By Lindsay Towns

Spock and I were friends right from the beginning and it wasn't just for my light denim jeans. We were buds, plain and simple. I love him and miss him like crazy.

By Pam Lareau

Spock was the kindest, sweetest guy. He had a heart of gold and loved everyone. Many days working outside he would follow us as far as he could go down the boardwalk always throwing kisses to all of us from above in the sky walk. Many days it would be a few games of chase or he would be playing a game of tug of war with someone. One day he gave Tanya a blue scarf and made sure she gave it to me, such a sweet guy giving special gifts to us. I wore the scarf all that day just to let him know it was one of the nicest things. A big part of my heart left with him, I will love him forever. He is truly missed. R.I.P. buddy, run free through the green jungle. XXX

By Mary Lee Jensvold

I met Spock in person in May 2013 when I visited Fauna. He was one reason Tatu and Loulis moved to Fauna, Gloria knew he would easily become friends with Tatu and Loulis, and they wouldn't be alone. But I knew of Spock decades before I met him. My thesis with the signing chimpanzees in the Friends of Washoe facility in 1987 was on imaginary play. As part of the study I had to find examples of imaginary play in other chimpanzees. One such study reported play in four chimpanzees reared in a nursery at the University of Montreal. One of those chimpanzees was Spock. He was there with Maya, Merlin, and Sophie. They were raised like human children for the first five years of their lives on campus. The study described that Spock and Sophie brushed the hair on their dolls—which is imaginary play.

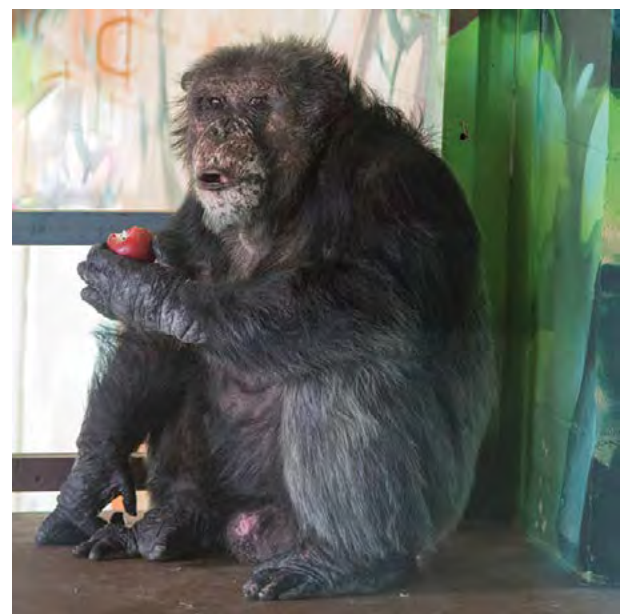
After five years Spock, Sophie, Maya, and Merlin moved to the Quebec City Zoo. There my research world again intersected with Spock. Environmental enrichment was a hot topic in the mid-1980's. The United States government required that laboratories, zoos and other facilities provide for psychological well-being of captive nonhuman primates. The work began to discover ways to do that and the discoveries all pointed to the importance of providing an environment that was stimulating and complex. Thus environmental enrichment is the provision of environment, objects, and activities that create complexity. The Friends of Washoe/CHCI facility was ahead of its time in terms of enrichment and many of our publications pointed out the importance of variety and novelty. Again we looked to other studies for support and one of those studies examined the role of novel objects in a group of four chimpanzees in a zoo. Spock again. Later my research explored the role of laughter in play interactions between chimpanzees. The Quebec City Zoo chimpanzees appeared again in a study examining fighting and play fighting.

Fortunately for Spock all of his research participation was noninvasive—very different than the research in biomedical laboratories. But nonetheless he spent his life in a place that neither

he nor any of his kind belong—captivity. After I met him in person he became a fast friend; a dear kind guy with a great sense of humor. I miss him but I know that is about me. As with the passing through the bars of each chimpanzee, I wish them well and imagine them free and in the loving arms of those who they lost in the contrived space of humanity.

For further information:

- Halberg, R., Jensvold, M.L., & Sheeran, L. (2007, May). Laughter, number of play partners, age and play bout duration in captive chimpanzees (*Pan troglodytes*) in an African sanctuary. Poster presented at the Symposium for University Research and Creative Expression, Ellensburg, WA.
- Fouts, R.S., Abshire (Jensvold), M.L., Bodamer, M., & Fouts, D.H. (1989). Signs of enrichment: Toward the psychological well-being of chimpanzees. In E.F. Segal (Ed.), *Housing care and psychological wellbeing of captive and laboratory primates* (pp. 376–388). New Jersey: Noyes.
- Fouts, R.S., Fouts, D.H., Jensvold, M.L.A., & Bodamer, M.D. (Spring, 1994). An enriching approach to captive chimpanzee care. *In Touch*, 1, 1–7.
- Mignault, C. (1985). Transition between sensorimotor and symbolic activities in nursery-reared chimpanzees (*Pan troglodytes*). *Journal of Human Evolution*, 14(8), 747–758.
- Paquette, D., & Prescott, J. (1988). Use of novel objects to enhance environments of captive chimpanzees. *Zoo Biology*, 7(1), 15–23.
- Paquette, D. (1994). Fighting and playfighting in captive adolescent chimpanzees. *Aggressive Behavior*, 20(1), 49–65.



Spock © NJ Wight

Life Expectancy in Chimpanzees

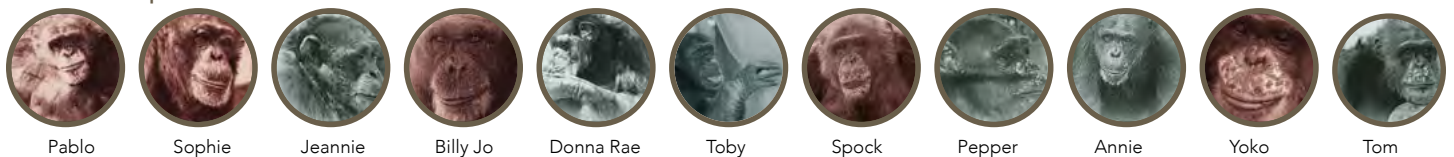
Chimpanzees reach many developmental milestones at the same time as humans. Gestation is 8.5 months, milk teeth are replaced about 5–6 years, and puberty begins at about 10–11. But the end stage in captive and wild chimpanzees is different than that of humans in developed nations. It is hard to get clear data on life expectancy but this image shows the percent of captive chimpanzees that are surviving at each age. This is an estimate based on some published research. There are two main points. It is erroneous to think that chimpanzees live into their 60's and 70's. Rarely do males live to 50! Statistically, females live longer, but it is rare they live beyond 60. The average age of death is about 32 for males and a bit later for females. You'll see the age for each of the Fauna chimpanzees on the top of the graph and the age for those who have died at Fauna on the bottom of the graph. Blackie (49), Dolly (51) and Sue Ellen (51) are beating the odds and have lived longer than any of the other chimpanzees at Fauna. We want to illustrate that we have an aged population at Fauna. We also want to illustrate that we have some chimpanzees in their late 20's who may be around for years to come!



Fauna Chimps Surviving



Fauna Chimps Deceased





New Skywalk funded by a grant from Lush

Chimhouse Projects

- We finished the Wet Paint campaign and now all the large rooms are covered in murals! The paint days required campouts in the tunnels. The chimpanzees were great sports as they had to stay outside while the painting occurred. Thank you for your support of this campaign!
- We added a new window in Back 2 with a view onto Island 3. This makes our large indoor space brighter and provides another lookout for the chimpanzees.
- We made great progress on the long skywalk. This new area will take the chimpanzees to an elevated enclosure that offers a vista near the pond on Annie's Island. This will be much like an existing walkway and enclosure, which is already a popular spot since it is away from the hubbub of the building. There the chimpanzees can groom quietly surrounded by the breeze, the leaves, and the sounds of birds. They can watch the rippling of the water and the families of Canada Geese and numerous ducks. We are excited for this project as it nears completion. It was funded by a grant from Lush for which we are so grateful.
- The solarium is an outdoor enclosure that will be surrounded by thick glass instead of caging. The chimpanzees will be able to enjoy this enclosure in the heart of winter! The framing and enclosure portions are up and the glass is on site. This project is also part of the Lush grant. We received the glass from a generous donor.

"I expect to pass through this world but once.

Any good therefore that I can do, or any kindness that I can show to my fellow creature, let me do it now.

Let me not defer or neglect it, for I shall not pass this way again."

—William Penn



Chimps in their large rooms covered by murals via the Wet Paint campaign

© NU Wight

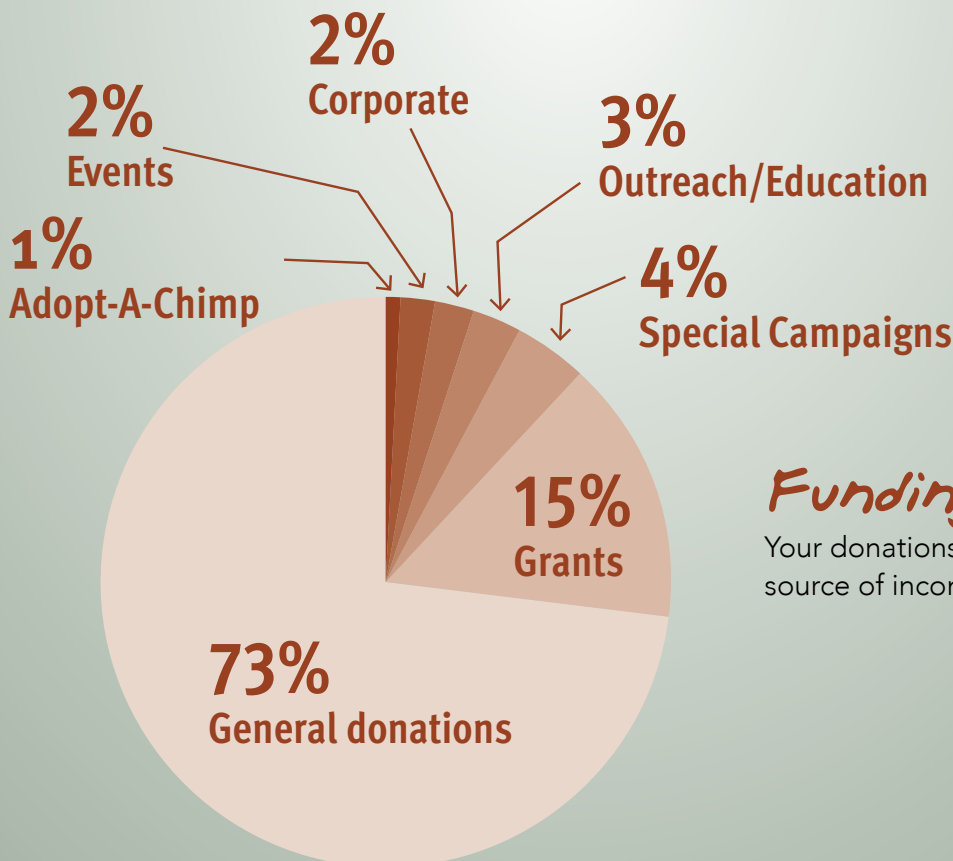
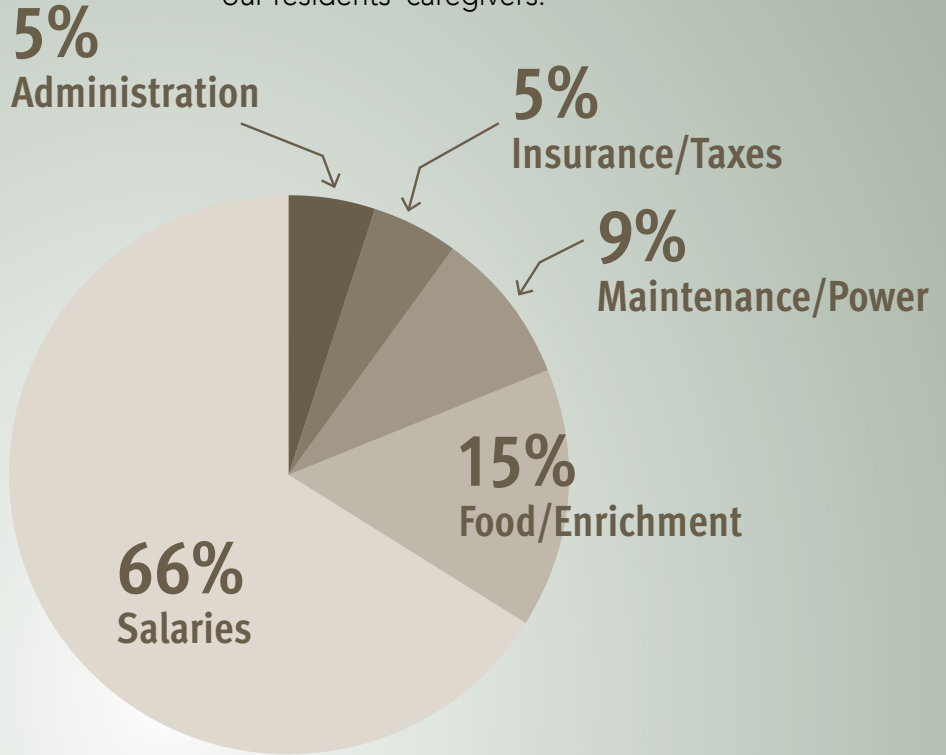
Income & Spending

Expense concepts this year—these are some examples of the expenses we incur in a year, but this is not exhaustive.

- The produce bill was \$86,117
- The over-the-counter meds and supplements bill was \$2,335
- The nut, seeds, and grains bill was \$6,656
- Amazon Wish List. Fauna lists items on our website that we request for enrichment. This year purchases totaled \$9,985.

Expenses

Our largest expense is salaries for our residents' caregivers.



Funding Sources

Your donations are our largest source of income.

Online Outreach

Website

Our website continues to reach a growing number of people with user acquisition via SEO increasing by 17% over last year. We also had a 12% increase in visits to our *Donate* page, 46% increase to *Adopt-A-Chimp*, and our *Shop* page saw a 32% increase in traffic over last year. The increase in the use of mobile handsets has become quite evident with a 36% increase in visitors accessing our website by mobile device. We continue to push out content that is optimized for mobile devices. A big contributor to website traffic is from clicks generated from our Facebook page. We have seen a significant increase in traffic from Facebook including 42% on mobile and 14% on desktop computers. Our most popular blog post in 2017, *Introductions in the Chimphouse*, detailed the first encounter between new residents Dolly and Blackie and Fauna matriarch, Sue Ellen.

Social Media

We continue to update our friends on Instagram and Facebook. We now have over 9,700 followers on our Facebook page, an 18% increase over last year. Our social media family continues to support Fauna and is very responsive to the requests we make on our timeline. This year our followers were quick to help with requests for funds to complete the *Wet Paint* project in the Chimphouse, to purchase items through our *Action Enrichment* outreach and to help support the cost of *Positive Reinforcement Training* for Eugene. We also had a successful *Giving for Apes* campaign that was bolstered by our friends on Facebook.

Timeline Activity

We continue to post photos and video of life in the Chimphouse, Monkeyhouse and on the farm. We have increased our educational posts adding more scientific and newsworthy articles in the past 12 months, which have had a high level of engagement. Articles on cruelty at Ontario Zoos and boycotting entertainment venues using captive animals were widely circulated by our supporters. The greatest response, however, was the outpouring of love and support we received when we shared the news of Toby and Spock's passing. These posts reached over 50,000 people.

Blog

Fauna has a blog on our website that features a variety of stories with topics about caregiving, enrichment, advocacy, research, and more. Stay tuned to our website and Facebook for alerts to new posts.

E-news

We have an e-news group and send electronic newsletters (E-Scoop), and various news flashes. You can sign up to receive these by visiting our website.



Follow NAPSAs to get other updates on Fauna.

faunafoundation.org



© NJ Wight

Dolly

An excerpt from our e-news that appeared for Mother's Day:

A Mother's Day Tale or Mommies Don't Let your Babies Grow Up to be Zookeepers

We have a new friend at Fauna, Dolly, who came from a zoo Parc Safari. We discovered some of her history by tracing her in the Chimpanzee SSP. The SSP is "a chronology of the population of chimpanzees (*Pan troglodytes*) in North American zoological parks" (p. 4) and is maintained by the American Zoological Association. The family trees of many chimpanzees are on this list; at least those who are traded or sold with transparency. Dolly is #345. She was born in Mesquite Texas. She and three other chimpanzees moved to Parc Safari in Hemmingford, Quebec in 1973. In 1979 Dolly had a son Donnie II. When he was 10 months old he was shipped to the Detroit Zoo. When he was four he was shipped to the Tempe Zoo. When he was nine he was shipped back to the Detroit Zoo. When he was 21 he was shipped to John Ball Zoo where he lives today. He recently made it into the news for throwing feces at a visitor. Donnie II wasn't alone in this journey.

Dolly wasn't the only mother at Parc Safari. When Donnie was born there were two other babies born within months of him. It must have been a busy time at Parc Safari with three infant chimpanzees. We don't know if these infants were "pulled" from their mothers and raised by zoo keepers or if they remained with their mothers until they left, but often babies are pulled from mothers for various reasons. Koko, the gorilla who signs, was with her mother at the San Francisco Zoo in her early months and then contracted shigella, becoming quite ill. She was pulled from her mother for treatment and never returned. Instead she joined Francine Patterson in a lifelong sign language project. It is chronicled in a documentary, *Koko The Gorilla Who Talks*. On the day Donnie II was shipped out, the other two infants Jo Mendi and Catherine went with him.

Dolly Facts

- » Born in Mesquite Texas
- » Loves the outdoors especially with vegan muffins
- » Is fiercely protective of Sue Ellen, her new friend
- » Loves a cozy nest of blankets
- » Since Dolly and Blackie arrived at Fauna our laundry has increased by 200 lbs. per week
- » Dolly can carry about 10 items at once using her hands, feet, mouth, and pelvic pocket



© NU Wight

“The meaning of life is to find your gift. The purpose of life is to give it away.”

—William Shakespeare

Parents never recover from the loss of a child. Imagine the heavy cloud of sadness when those babies left their mother's arms. We don't know how many babies at Hemmingford didn't make it into the SSP, so we don't know how much suffering there was. Daisy does not appear on the SSP but she was born and died at Parc Safari. Babies could have been sold casually, perhaps ending up at other zoos in Quebec, such as St. Felicien where Toby lived. Toby doesn't appear on the SSP, so we don't know how he got there, or any of his family members. While this is a tale about a mother's loss, the children's loss and fear must also be remembered. In the human realm the joy of families, the bonds between mothers and babies, and the sadness when this is disrupted so tugs at our hearts that it drives billions of dollars in donations to humanitarian organizations. Yet we should pause to consider this is

standard practice in the zoo industry. Zoos continue to breed chimpanzees, gorillas, orangutans, and bonobos in the name of conservation, but the reality is that babies bring more visitors to zoos. Those visitors bring money in the zoo bank accounts. When those babies grow up, off they go to make more babies at other zoos. This cycle continues today.

So when we think about the joy of our mothers, our babies, our families, we should remember Dolly and the moment she lost hers and what we can do to end this horrific practice.

Please consider subscribing to our e-news for more stories like this and news about Fauna.

<https://www.faunafoundation.org/feature/e-newsletter>

Programs

Symposiums

- This year we offered seven Sanctuary Symposiums to 137 visitors. This program generated \$7,348 in donations. We also sold merchandise and increased our outreach in this program.
- We offered one day-long workshop about trees and chimpanzee signs and artwork. We had six attendees and generated \$1,800 in donations.



Symposiums

Fauna Interns

We had a busy summer with four Fauna interns and a Friends of Washoe intern. Fauna interns recorded how the chimpanzees used enrichment. They also made special enrichment projects including a non-dairy yogurt dipping device and a forage cube.

McGill interns

- There were five university interns this year including one from University of Montreal. Projects included sign language studies, caregiver interactions with chimpanzees, and more. Charlotte Hings coauthored a poster presentation at Rocky Mt. Psychological Association.
- We thank Dr. Colin Chapman for his ongoing support of this collaboration.

Campaigns

- **Giving Day For Apes** is organized by Arcus Foundation and Global Federation for Animal Sanctuaries is an online giving day that focuses on nonhuman primate sanctuaries across the globe. Fauna received \$10,199 this year.
- **Giving Tuesday** is a day of giving following the American Thanksgiving shopping events, Black Friday and Cyber Monday. This year we generated \$3,620.
- **Wet Paint** was a two-year campaign to raise funds to paint the large interior rooms of the chimp house. We raised \$4,735 this year.
- **Adopt-A-Chimp** is a campaign where supporters can adopt a chimpanzee. This year we raised \$6,770.
- We also asked for funds specifically for **Caregivers**, **Spock's health**, and **Staff Training for Positive Reinforcement Training**.

Events

- **Paint Nite** was organized by a Fauna staff member. Supporters and staff attended and painted pictures of chimpanzees. This generated \$635.
- We had a presence at numerous **VegFests** in the US and Canada largely through the hard work of volunteers.
 - » In Canada it was Niagara, Montreal, and Toronto VegFests
 - » In the US it was Los Angeles, SoCal, and Long Beach VegFests



© NJ Wight



- **Our 20th Anniversary** event in October at Fauna Foundation generated \$7,413. This day featured tours, a guest speaker Rob Laidlaw, sale tables, and a great time.

- **The Concordia University Animal Rights Association Yoga Fundraiser** was in February. This was organized by a volunteer and is the second time for this event.

- **Chimpopolis:** This summer, a group animal rights philosophers and long time friends of the Fauna Foundation, Andrew Fenton and Leticia Meynell from Dalhousie University, Sue Donaldson and Will Klymick from Queens University and authors of *Zoopolis*, and John Gluck, former student of Harry Harlow and now animal ethicist and author of *Voracious Science and Vulnerable Animals*, came together in Montreal to collaborate on a white paper and federal grant to reexamine the use of monkeys in research in Canada. They are revising the 3 R's (replace, reduce and refine) in the use of nonhuman animals particularly primates in research which is poorly regulated in Canada. The group also included Fauna staff and interns at the meetings. Fauna hosted a speaking event with this group that was open to volunteers and staff to learn about the project and animal ethics.



Chimpopolis 2017

- **North American Primate Sanctuary Alliance (NAPSA):** NAPSA had a virtual workshop which is still available on its website. Gloria attended the Steering Committee annual meeting in Shreveport, Louisiana in September. It included a visit to member sanctuary Chimp Haven.

"If our hopes of building a better and safer world are to become more than wishful thinking, we will need the encouragement of volunteers more than ever."

—Kofi Annan

Volunteers

Our work is so well supported by our volunteers! Hugs, pant hoots and thanks to them:

Alexia Armato
 Andreeanne Gagnon
 Andrée Dubé
 Andrew Prior
 Audrey Côté
 Bea Perryon
 Beverly Shaw
 Camille Lecocq
 Carole Bergeron
 Caroline Lefebvre
 Chandal Nolasco da Silva
 Charlotte Hings
 Chris Snively
 Christine Piché
 Christine Sabbagh
 Dale Henshaw
 Danielle Boulais

Derek Donnelle
 Diane Mallette
 Eric Gauthier
 Harry Stoni Korb
 Ingrid Fortin
 Isabel Da Conceicao
 Jacinthe Daprato
 Janet Warne
 Jeff Shimizu
 Jennifer Côté
 Jocelyn Lefay
 Johanne Caron
 Johanne Ruel
 Julie Lépine
 Julie Peltier
 Justin Taus
 Karen Colwell

Kathleen Mauro
 Kathy Bosci
 Kimberly Hains
 Line Chenier-Chartrand
 Lisa Drew
 Magdalena Kiczka
 Manuela Ziemer
 Marie-Claude Beaudry
 Marie-Claude Fontaine
 Marie-Elaine Cusson
 Marie-Eve Bédard
 Marie-Pierre Bonin
 Michael Caplan
 Michelle Soucy
 Mira Grandillo
 Nancie Wight
 Nancy Adam

Natalie Auersperg
 Pauline Parent
 Sandi Young
 Sarah Pomerleau
 Simon Abramovitch
 Simon L'Allier
 Sonia Brossard
 Sophie Vadnais
 Sven Kierulf
 Sylvie Langlois
 Tala Fakhoury
 Talia Dezso
 Tara Brown
 Valerie Picard
 Vicky Simms



Rachel: 35



Chance: 34



Petra: 30

Chimpanzees



Sue Ellen: 51



Dolly: 51



Blackie: 49



Tatu: 42



Maya: 40



Loulis: 39



Jethro: 28



Regis: 29



Binky: 29

Monkeys



Eugene: 32



Newton: 18



Darla: 31



Lucky



Geese

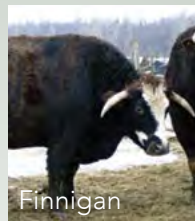
Farm Animals



McLeod



Sky



Finnigan



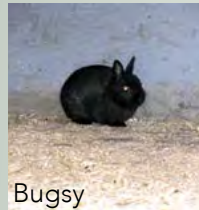
Eyore



Mary



Fou Fou



Bugsy



Sam



Peter Rabbit



Terry



Katrina



Skunk

"By ethical conduct toward all creatures, we enter into a spiritual relationship with the universe."

—Albert Schweitzer



Yani, June 29



Theo, August 22

*Passings
in 2017*

"If someone we love is stolen away from us, the way to have them live on is to never stop loving them."

—James O'Ben



Randy, September 15



Toby, October 16



Elsa, November 2



Spock, December 4

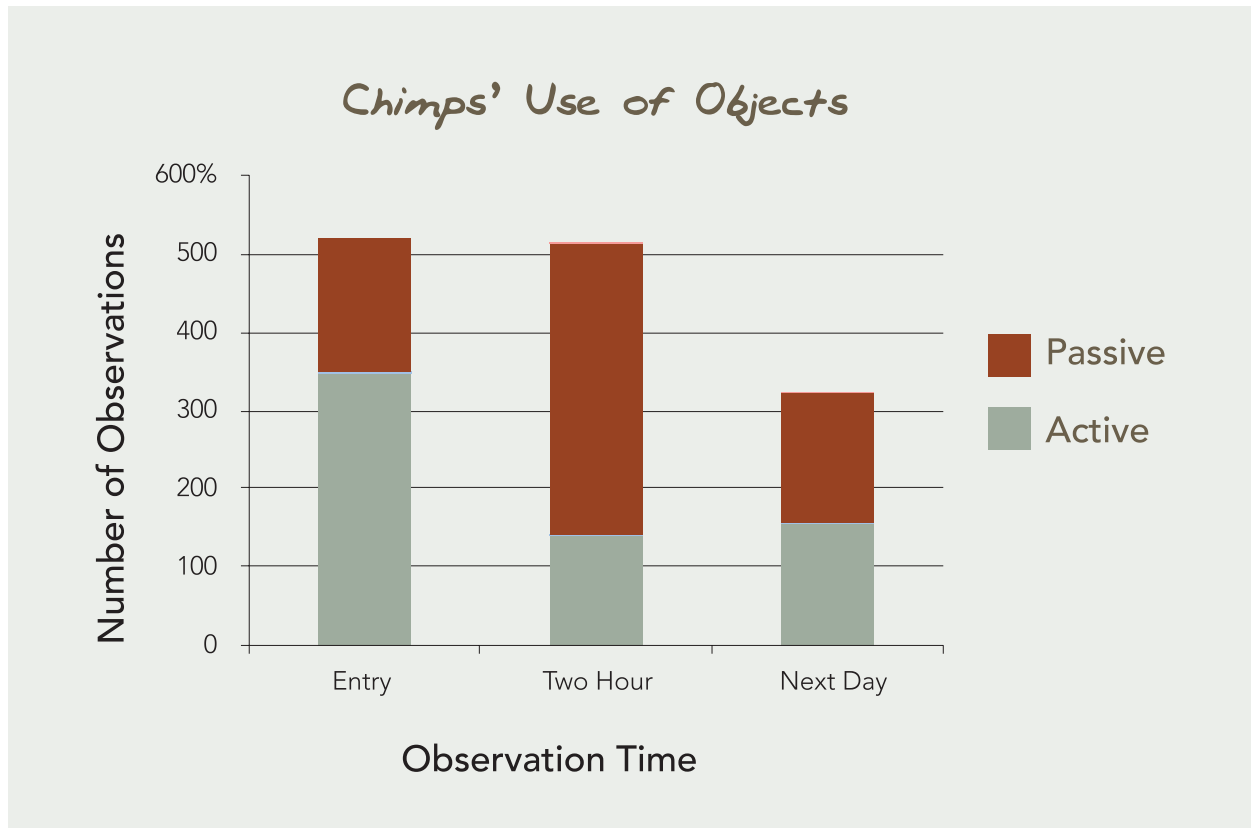
Photos © NJ Wight

Behavioral studies, presentation & publications

2017 Summer Intern Project

This summer interns recorded the chimpanzees' use of objects. We provided a set number of enrichment objects and placed them in enclosures before the chimpanzees entered. We made observations when the chimpanzees entered, two hours later, and the next day at the same time. We recorded if the chimpanzees used objects and how they used them. We recorded whether the chimpanzees used objects actively, for example eating, holding, carrying, etc. or passively, for example sitting or lying on an object.

This graph shows that the chimpanzees overall used objects with the same frequency at the entry time and two hours later. Yet passive use increased in the second observation time. The object use the next day was 60% as often as the first day.



Fauna Interns



Enrichment



Tatu



Loulis

© NJ Wight

Sign Language

Some of the caregivers at Fauna were caregivers for Tatu and Loulis in Ellensburg, Washington. There the caregivers had proficiency in American Sign Language and learned research and observation methodology. They were receiving degrees in Primate Behavior. At Fauna we continue to record Tatu and Loulis' use of signs. This year we presented some analysis of these records at the Annual Meeting of the Rocky Mountain Psychological Association in Salt Lake City. Some of the highlights are:

- Tatu and Loulis both continue to use the breadth of their vocabulary items at Fauna Foundation. Word bubbles show the vocabulary items and the size of a word in the image corresponds to the number of days the sign appeared. For example in Loulis' bubble CHASE is large because he used this sign many days. This is one of his favorite games after all!
- We recorded chimpanzee-to-chimpanzee signed interactions. Before arriving at Fauna, Tatu and Loulis had never met chimpanzees who didn't sign. So they often signed to the other Fauna residents when they first arrived. One interesting sign was Tatu's use of the sign SORRY. She signed this to the others in response to high arousal, aggression and in seeking reassurance. An example of the text from October 13, 2014 is:

Tatu and Spock were playing tickle and wrestle... Chance came into [an enclosure across from them] and started screaming. Tatu sat up, looked at Chance and signed SORRY.

This research is made possible through the support of Friends of Washoe, Bohnett Foundation, and Winley Foundation.



Tatu's vocabulary use in 2016



Loulis' vocabulary use in 2016

Grants/Corporate Donations/Campaigns

- **Dose Juice** donated cold pressed juice valued at \$2,880.
- **Genuine Health** donated supplements valued at \$5,374.
- **JG** is where we buy much of our produce and they rebated \$2,945.
- **Service Canada** is a government program that provides grants to subsidize summer student employees. This year they funded \$8,860 for two students to work on the nature reserve and one outreach assistant.
- **Lush** granted \$25,000 to finish the skywalk out to the pond and a solarium to provide a winter sunroom. This project began this year and will finish in the spring. Lush activities such as in-store awareness events and website features, create additional awareness for its grant recipients. We were pleased to be featured in an Awareness event in the downtown Montreal Eaton Center store, a feature on their webpage, and Chance was on the lid of a charity pot that they sold in stores!
- **Nature Action** is a non-profit organization that helps people and organizations adopt best environmental practices. We are working on a collaborative project that provides habitat restoration at Fauna Foundation. Activities that occurred this year included seeding and installation of nest boxes to attract native prairie bird species and pollinators. This is an important aspect of the new Conservation Area.
- **Friends of Washoe:**
 - » Staff immigration assistance: \$647
 - » Intern Social: \$360
 - » Friends of Washoe provide grant funded support for Tatu and Loulis' caregivers. The grants FOW received were from Winley Foundation and provided \$18,000 in 2017 and \$32,000 for 2018.
- **Animal Place Food for Thought Campaign** is a program to encourage organizations to adopt an animal friendly workplace. Fauna now has a vegetarian policy and received \$250.
- **NAVS** provided \$10,000 to support Positive Reinforcement Training.
- **Matt N Nat Hope Bag** had a program this year featuring a charity bag and the purchaser could choose which charity would receive the proceeds from the purchase. Fauna received \$6,100.
- **Maison Bourdon Sunglasses** are a line of sunglasses and for each pair sold, Fauna receives \$10. This year we received \$60.
- **Saved Kisses** is a vegan line of clothing and purchasers can choose which charity will receive proceeds. Fauna received \$36.
- **Cool East Market** makes and sells minimalist and Tabi vegan shoes. They have donated \$40.
- **For general caregiving operations** we received a grant of \$1,000 from John Givin Chase and \$5,000 from James A & Donna Mae Moore Foundation.



Nests in the installed birdhouses



Conservation area

© NJ Wright



Pileated woodpecker

© NJ Wright

The Google Non Profit Program

Introduction

In May of 2017, the Fauna Foundation was approached by the Acquisio Cares Program to take part in a grant-based advertising program offered by Google to non-profit organizations. The Acquisio Cares program is a volunteer run committee that operates inside of the marketing technology company Acquisio. The program aims to help non-profits by providing a completely free turnkey program to access free advertising on search engines in order to raise funds, donations, recruit volunteers, gain awareness and connect with their target audience online.

What is a Google Grant?

The Google Grants program was established by Google to help eligible non-profit organizations around the world access online marketing services. Offering as much as \$10,000 in free advertising budget every month, the program can significantly support an organization's goals using online marketing campaigns on Google. The Acquisio Cares program offers free expert management and reporting of the advertising campaigns inside Google's AdWords advertising platform.

How Has the Acquisio Cares Program Helped Fauna?

When Fauna began working with Acquisio Cares the two organizations worked closely to establish eligibility and secure the Google Grant inside an AdWords account. The Acquisio Cares program researched Fauna's keywords and built ad copy around each page of the website that we mutually agreed on targeting in the ad campaigns.

Campaigns on Google were built around the following pages:

Action	URL
Donate Now	https://faunafoundation.org/donate
Adopt-a-Chimp	https://faunafoundation.org/donate/adopt-a-chimp
Become a Supporter!	https://faunafoundation.org/donate/become-a-fauna-supporter
Amazon Wish List	https://faunafoundation.org/donate/amazon-wish-list-everyday-items
Lifetime Care Fund	https://faunafoundation.org/donate/lifetime-care-fund
Corporate Sponsorship	https://faunafoundation.org/donate/corporate-sponsorship
Planned Giving	https://faunafoundation.org/donate/planned-giving
Donate Points	https://faunafoundation.org/donate/donate-points

This means that the Acquisio team built a set of ads on Google that correspond to each page listed above on the Fauna website. Here is an example of a branded ad on Google that appears when people search for the Fauna Foundation:



There are a total of 23 ads currently running on behalf of the Fauna Foundation inside Google. Since July of 2017 when the campaigns were first launched they have had the following impact:

- **118,245 Impressions**
Impressions are the amount of people who viewed ads about The Fauna Foundation.
- **2,848 Clicks**
Clicks are the number of people who saw an ad about The Fauna Foundation and actually clicked through from one of the ads to one of the pages listed above.
- **2.41% Click Through Rate (CTR)**
The CTR measures the average amount of people who click through your ads, from the total amount of impressions it received.
- **Total Cost: \$3622.04**
The Total Cost is how much The Fauna Foundation would have paid to have this type of online exposure that is covered by the Google Grant. Since Google's search engine is a Pay-Per-Click (PPC) advertising model, The Fauna Foundation's grant only pays for when people actually click on an ad; therefore, there is still opportunity to optimize Fauna's campaign's without approaching the monthly \$10,000 ad spend capacity.

The Acquisio Cares program is hoping to achieve even better results with Fauna in 2018 and beyond with their Google Grant. The company is proud to contribute to Fauna's overall mission and success.

Thank you Donors!

Elizabeth Abbott
Jennifer Ablard
Barbara Abrahamowicz
Simon Abramovitch
Carolyn Abshire
Marion Achoulias
Nancy Adam
Rita Ahti
Arlene Aish
Jeannine Alfieri
Rolande Allaire
Nuria Alonso
Cynthia Anderson
Barbara Andrews
Michael Angers
Animal Place
Joan Antal
Evelyn Antypowich
Christine Ares
Sherri Armet
Julia Aronov
Valerie Arsenaault
Carol Arthur
Kathryn Ashkenazy
Cooper
Atelier Motosport
Pierre Beullac Inc.
Helene Auclair
Natalie Auersperg
Dominique Auger
Sandra Ann Baines
Elizabeth Baird
Christine Balit
Andrea K. Balsara
Dave Baluyot
Linda Bangay
Kathleen Banger
Sheila Banik
Russell Banks
Dineen Baran
Megan Barbato
Stacey Barbetta
Janet Barkhouse
Rachel Barnes
Lesley Barnett
Sarah Baron
Angela Barraclough
Hélène Barrette
Gillian Bartlett
Dominic Bastien
Diana Baxter
Jacques Beaudoin
Josee Beaudoin
Marie-Claude Beaudry
Michel Beaulieu
Jasmine Beaulieu
Marie-Eve Bedard
Scott and Suzy Beeler
Lydia Beitelman
Kim Belley
Anne-Marie Benard
Alexis Bennett
Maryse Benoit
Carole Bergeron
Pierre Bertrand
Verena Besso
Lynn Bessoudo
Alana Best
Kelly Biggs
Rose-Ann Bigue
Barbara Birkett
Susan Bishop
Mirja Bishop
Maryse Bittar
Mrs. Black Black
Margaret Black

Gary Blair
Maureen Boag
Anna Bocsi
Kathy Bocsi
Daisy-Ivy Bode
Body in Motion
Renee Boileau
Amelie Bois
Linda Bolen
June and Dennis
Bolton
Marie-Pierre Bonin
Rosa Borisova
Benoit Bouchard
Rino Bouchard
Danielle Boulais
Yasmine Boumati
Soazig Bourgine
France Boutin
Ceinwen Boyd
Patricia Boyle
Bonnie Bradbury
Johnstone
Karen Bradford
Amanda and Jim
Bradley
Carolyn Bradner
Lise Brais
Brad Braufman
Diane Brault
Darlene Braun
Richard and Darlene
Braun
Dianne K Breen
Carole Brennan
Suzanne Brennan
Jared Brenner
Joan Brewster
Marion Britnell
Jane Brockway
Catherine Brodeur
Sonia Brossard
Kathleen Brosseau
Marie Brouillet
Martina Brown
William Brown
Scott Bruce
Marianne Bruneau
Grant Buckler
Martin Burke
Louise Burke
Jesse Burns
Jane Burnside
Donna Burwood
Line C Chartrand
Cynthia Cacciatore
Cafe Press Inc
Louise Cahsens
Annya Cajal
Kristina Calce
Caldwell and Company
Julie and Ronald J.
Caley
Irene Cameron
Jacqueline Campbell
Katheryn Campbell
Melinda Cape
Johanne Caron
Marcelle Caron
Bruce Carter
Amanda Caseboldt
Debra Casperd
Centraide du Grand
Montreal
Deborah Chalmers
Cindy Chan

Nicholas Chapoy
Deb Charchuk
Sandrina Charron
Richard Chartier
Brigitte Chenier
L.Dale Chisholm
Jocelyne Chouinard
May Chow
Clement Christiane
Taryn Cigagna
Jane Claffey
Martha Jean Clarke
Madeleine Claudi
Christiane Clement
Mireille Cloutier
Robin Clyde
Jean-Claude Coderre
Jan Collier
Iain Colquhoun
Shannon Cook
Cool East Market
Jean-Pierre Corbeil
Kathleen Corby
Kelli Cornforth
Anne Cornwall
Robert Cote
Christine Cote
Jennifer Cote
Sabrina Côté
Audrey Côté
Renee Cotton
Ken Cound
Marilyn Court
Pierre Cousineau
Ghislaine Couture
Diane Cowan
Julie Cowell
Jasper Cox
Allison Cox
Susan Coxe
Christopher Cranmer
Martha Cronyn
Sari Cross
Leticia Cuenca
Rena Cugelman
Patricia Currie
Marie-Élaine Cusson
Zeina Dabbagh
Vivien Dagher
Nicole Daigle Frezza
Manon Dalpé
Liliana Danel
Althea Dani
Jacinthe Daprato
Brenda Darby
Tanya Das Neves
Lynn Davidson
Claudia Davies
Deborah Davis
Andrea Dawkins
Lesley Day
Barbara Day
Marie-Andrée De
Carufel
Sharon De Gaspe
Power
Clode De Guise
Francine De Rouin
Deva Delanoe
Jennifer Dempsey
Gerelynam Denbaasan
Magali Depras
Chantal Deschenes
Caitlin Deseve
Celine Desjardins
Jade Desmarais

Carole Desormeaux
Marie-Christine
DeTunccq
Arlene Devine
Siobhan Devlin
Matthew Devries
Jeffery Devries
Talia Dezzo
Sabine Di Filippo
Isabella Dicristofaro
Elizabeth Dietsch
Kailie Dombrausky
Shelley Domingue
Derek Donelle
Willie Donelle
Caitlin Doyle
Danielle Doyon
Lisa Marie Drew
Arielle Drissen
Rozlyn Druckman
Donya Drummond
Violet Dubeau
Marie-Eve Dugas
Diane Dulong
Nicole Dumoulin
Brenda Dunbar
Lisa Duncan
Maureen Dunne
Georges Dupras
Tristan Duquette
Andrée Durand
Shelley Dykes
Eileen Easton
Allyson Echlin
Sylvia Edgerton
Susan P. Eisele
Fred Elbl
Hannah Elder
Klara Eli
Liz Elliott
Roxiane Engineer
(Alexander)
Marilyn Evenson
Andria Eyers
Avsar Eymirlioglu
Tala Fakhoury
Janine Falck
James and Elizabeth
Falcone
Lia Falzon
Patrizia Fanzone
Kate Farrell
Francesca Fazio
Danielle Fecteau
Stephanie Federman
Susan Feeley
Mary Fendelander
Sylvia Fenech
Andrew Fenton
Clint and Michelle
Field
Andrea Fieldman
Fitzhenry Family
Foundation
Karin Fleischeuer
Jocelyne Fleming
Clancy
Michael & Wendy
Flohr
Alyssa and Brian Flynn
Marie-Claude Fontaine
Andre Fortin
Tina and Joshua Fouts
Kathryn Fox
Tamas Frajka
Cathy Frankow
Marsia Frascadore
Sylvia Fredericks
Bella French
Friends of Washoe

Delee Fromm
Tamie Fulford
Steven Gagnon
Thomas Gajewski
Brigitte Gal
Leslie Galbraith
Marna Gale-Godo
Sean Gallagher
Joan Gallagher
Veronica Garcia
Glenn Gardner
Courtney Garofolo
Monica Garzuglia
Jonathan Gaudreau
Serge Gaumont
Eric Gauthier
Persicka Gear
Patricia Geary
Richard Généreux
Chantal Ghali
Corinna Ghaznavi
Elizabeth Gibbs
Jean-Nicolas Gignon
Joanne Gilbert
Kathryn Giles
Emma Gillies
Karelle Girard-Huneau
John Givin Chase
Danielle Glaude
Nona Goddard
Jacques Godin
Ceylan Goktalay
Sandra Goldsmith
Sonja Goldsmith
Joshua Goldstein
Parastoo
Golmohammadi
Jody Gomber
Peter Gomberg
Teresita Gonzalez
Lynn Goral
Yana Gorbulsky
Susan Gordon
Renalee Gore
Kristine Goulet
Valerie Gow
Donna Graham
Stephanie Graham
Kathleen Grainger
Mira Grandillo
Angelo Grandillo
Béatrice Granger
Nathalie Gratton
Vineca Gray
Jutta Greiffenberg
Karine Grenier
Jeanne Gribble
Griffin Jewellery
Designs
Laurence Grondin
Marcia L Grothe
Anne Guenther
Lorna Guerin
Gilbert Guertin
Irene Guman
Karen Gundelfinger
Susan Gunderson
Cindy Hache
Kimberly Hains
Ann Halcromb
Katharine Hall
Carol Hall
Carolyn Hall
Cindy Hall
Peter Hamilton
Barbara Hamilton
Patricia Hamilton
Cynthia Hammond
Ellen Hand

Delia Lynn Hannon
Ali Harb
Steven Harnad
Jason and Sarah Harris
Jacqueline Harris
Linda and Ed Harris
Anne Marie Harvey
Kay Harvey
Paul G Haslam
Jean Hattie
Diana Healy
Kimberley Heaps
Meryle Heatherington
Carolyn Hedmann
Cohen
Diana Hehner
Patricia Hehner
Janet Hehner
Kevin Heiss
Eileen Hennessy
Judith Henning
Madeleine Henry
Garry Herbers
Sandra Herman
Marisa Hermsdorfer
Linda Heslegrave
Ruth Hibberson
Andy and Caroline
Hickman
Terry P Higgins
Cal Hindson
Charlotte Hings
Izzy Hirji
Mark Hnatiuk
Dixie Lorena Hodges
Carol B. Hoffer
Monica Hofmann
T Hollosi
Corum Holtz
Carol Holub
Christine Hood
Hopital Veterinaire
Taschereau
Cheryl Hopkins
Nancy Horton
Belle Horwitz
Haroune Hosni
Katherine Howitt
Muysson
Li-Chin Huang
Sylvie Huat
Chantal Huberdeau
Raphael Hubert
Lulu Hughes
Paul-Marie Huot
Janet Ikola
Karima Ilyass
Doreen Ingram
Pamela Ireland
Sally Irvin
Eric Isaak
Melanie Isbister
Michelle Iverson-
Marshall
Sally Ives
J.G. Rive-Sud Fruits et
Legumes
Yasmin Jackson
Dominique Jacot
Shreya Jaiswal
Anne-Marie James
James A & Donna Mae
Moore Foundation
Ray Jantz
Elizabeth JaQuay
Louise Jarrold
Roepke Jayne L
Jenny Jellison
Helen Jenkins
Mary Lee Jensvold

Ronald Jhu
Lindsay Johnson
Nancy Johnson
Virginia Johnson
Maribeth Johnson
Marilyn Johnston
Katrina Johnston
Marie Jolivet
Catherine Jones
Cindy Jones
Roslyn, Gil, & Joey
Kaplansky
Bejan Kashani
Betty Kask
Margaret Kastner
Evangelia Katsaros
Arwinder Kaur
Michael Kay
Ruby Kaytor
Margery Kaytor
Melanie Kendal
Margaret A Kennedy
Joyce Kennedy
Linda Kervin
Arryn Ketter
Priscilla Khalil
Navid Khara
Geraldine J. Killen
Martin Kinal
Sarah King
Kevin Kinghorn
Patricia Kirkpatrick
Peter Knapp
Maryanne Kneif
Lingard Knutson
Roza Koprowicz
Stoni Harry Korb
Xenia Kourgouzova
Kate Kovacs
Dalyce Kowalski
Candace Kowalyk
Angela Kozak
Simon L'Allier
Jean L'Heureux
Anita La Selva
Anne Laberge
Marsha Labovitz
Sylvie Lacaille
Carole Lacasse
Karine Lacasse
Laurence Lachapelle
Neveu
Suzanne Lacroix
Mae-Dell Lacy
Rayane Mohamed
Laddi
Diane Lafond
Michelle Lafontaine
Roland and Lucy
Laframboise
Bryan Lagace
Sylvie Lahaie
Jim Laird
Johnaine Lalonde
Louise Lambert
Catherine Lamoureux
Valerie Lampard
Charles-Ed Landreville
Lenora Lane
Jason Langdale
Chiasson
Elaine Langlois
Nicole Lantorno
Lise Lareau
Vanessa Lariere
Trevor and Jennifer
Laroche
Benoit Larocque
Normand Laroque
Denise Larsen

Szeming Lau	Jessica Mas	Irma Niemi	Julianna Raeburn	Natasha Schorb	Danuta Szachanski	Sandra L Whelan
Suzanne Laurendeau	Kathie Maser	Vanessa Noel	Patti Ragan	Cindy Schutzer	Kirk Szmon	Helen Whibbs
Nancy Lauzon	Lisa and Jimmy	Dominik Noel	Karen Ram	Schwab Charitable	Perry Taga	Marilyn White
Peter Lavina	Maskell	Chandal Nolasco Da Silva	Gregory Ramsay	Mara Scomparin	Pirjo Tahtinen	Jean Whitehead
France Leblanc	Terrye Masson	Rudolf Noll	Leslie and Delores Randall	Jay Scott	Dr. Deborah Tanzer	Natalie Whitham
Sylvie Leblanc	Atsuko Matsuoka	Lorraine Norchet	Shelley Rank	Sandra Seasons	Christine Taouk	Brian Wiest
Deborah Leckman	Kathleen Mauro	Nanette Norris	Donald Rasmussen	Carolyn Seder	Jane Taylor	Nancie Wight
Charles Leeds	Emma Maxinuk	Max Novack	Cristy Rasmussen	Gilles Seguin	Benoit Theriault	Sheila Wildeman
Jocelyn Lefay	Janet Maxwell	Ulrike Nowlan	Catherine Raybould	Michelle Seguin	James Thompson	Shelley Williams
Monique Lefebvre	Debby J. Maxwell	Harris Nowlan	Michelle Raymond	Jennifer Seguin	Claire Thorseth	Karen Willmott
Caroline Lefebvre	Donna Maxwell	Janet O'Donnell	Therese Raymond	Ann Serra	Beth Thoun	Louise Wills
Michel Legare	Edward Mayfield	Maureen O'Leary	Maheux	Karen R Sevack	Joan M. Thuebel	Judith Wilner
Julien et Lyne Lemay	N. Mayrand	Benny Oleszczuk	Nicholas Read	Nikhil Shah	Erna Toback; PHD	Robert Wilson
Rene Lemay	Maureen McAllister	Kevin McAvoy	Tony Rebelo	Colleen Sharman	Nicole Torcolini	Mary Wilson
Liane Lemieux Gingras	Joan McCordick	Gina Osborne	Lynn Rederburg	Devine	Toronto Lofts Realty Corp.	Lise Winer
Cris Leonard	Janetta McCreery	Lynda Ouimet	Marlize Reedijk	Kathryn A Shaul	Kimberly Torres	Tracy Wise
Dennis Leonard	Patricia McElveny	Pascale Page	Geoff Regalado	Mylene Shaumette	Carol and Peter Tracey	Drogheda Woods
Stephane Lepage	Cathryn McFawn	François Pagé	Angela Reid	Heidi Shaw	Richard Tremblay	Lesa Wright
Carmen-Louise Lepine	Diane and Wayne	Alice Palmer	John Renwick	Beverly Shaw	Chantal Tremblay	Janice Wright
Julie Lépine	McKellar	Mia Parangn	Scott Requaft	Jeff Shimizu	Melissa Trihey	John Wrightly
Audrey Lessard	Heather McKellar	Pauline Parent	Clairette Rheault	Patti Shropshall	Deborah Trudeau	Christine Yanagawa
Denise Levert	Lindsay McLaren	Deanna Parkes	C Riall	Ronald Shutler	Christiane Trudel	San Yip
Laurence Levesque	Patricia McLaughlin	Brenda Parks	Debra Ricci	Nancy Sienkiewicz	Louisetude Trudel	Manuela Ziemer
Renee Levy	Kendra McLellan	Donna Parozanin	Dianne Ricci-Welbourn	Martha Sikaras	Danika Trudel	Reverie Foundation
Willard and Nancy Lewis	Greg McLeod	Maria-Susana Pataro	Cynthia Rice	Bonnie Siler	Peggie M. Tsai	
Chris Lewis	Sharon McMeekin	Sylvain Patenaude	Tanya Richard	Dailene and Arne Silverberg	Cristina Tsukamoto	
Richard Lipman	Shelagh McNally	Suzanne Paterno	Michele Rideout	Lorraine Simard	Anne Turcotte	
Caroline Liptay	Deborah McQuattie	Jean Patton	Adam Rigby	Tonina Simeone	Marc Turgeon	
Claudia Lirette	Nancy Megna	Christos Pavlatos	Johanne Rioux	Vicki Simmons	Andrew Turner	
Margaret Livingstone	Ira Melnick	Arnau Payette	Deborah Robbins	Patti Sims	Fran Turner	
Shona Livingstone	Caroline Mentha	Mary-Jean Payeur	Jacqueline Robert	Karen Sinnett	Elizabeth Turner	
David V. Lobb	Metro Montreal Communications	Valerie Pecquet	Martine Robert	Adrienne Sklar	Chase Twichell	
Jennifer Lobb	Meryl Midler	Dorothy Pecuch	Judith Roberts	Erik Sklover	Kevin Tyler	
Margaret Lock	Jenna Miles	Sanne Peeters	Laurie Robertson	Karen Skril	Katherine Tzventarny	
Carol J. Lodge	Mary Millemaci	Anne Pelletier	James Robertson	Marie-Claire Skrutkowska	Tyler Udall	
Caroline Loftus	Mary Miller	Liz Peloquin	Elaine Robertson	Linda Slattery	Caitlin Udall	
Nancy Lomax	Lindsay Milner	Marion Pennell	Heather Robertson	Joan Small	Tanya Unger	
Karl Losken	Margaret Milner	Liyanage Perera	Jocelyne Robichaud	Lori Smehoff	Mary Usher-Jones	
Julie Lotton	Sally Mitchell	Richard Perin	Jillian Robins	Danica Smej	Anne Vadenais	
Isabelle Loubot	Sue Mitchell	Danielle Perrin	Tyler-Jane Robins	Patricia Smith	Judith Ann Valdes	
Ken Louie	Siusan Moffat	Beatrice Perryon	Anitha Robinson	Janet Smith	Lynn Valenta	
Amanda Lovato	Kevin Moffatt	Joni Petrica	Patricia Robinson	Erin Smithson	Joan Van Damme	
Jorge Luiz	Huguetta Moisan	Jill Picard	Carole Rodrigue	Margaret M. Roebuck	Margaret Van Eerdewijk	
Patricia and Richard Lynch	Denis Monast	Christine Piche	Margaret M. Roebuck	Daniele Rohrbach	Tara Snively	
Bridget Macedonski	Carl Mondello	Robert Pierce	Steven Roman	Steven Roman	Sandra Snow	
Catherine Mackenzie	Johanne Monet	Karen Pikoulas	Dawna Rose	Dawna Rose	Felix Solis	
Sarah Mackenzie	Chantal Monette	Marie-Eve Pineault	Betsy Rosenwald	Betsy Rosenwald	Gail Soloway	
Angela Maffei	Marie-Claude Monette	Danielle Pirsch	Wanda Ross	Wanda Ross	Bernadette Sonefeld	
Marilyn Magyarosi	Mylene Montplaisir	Genevieve Pisarski	Harley Rothstein	Harley Rothstein	James Sorensen	
Josee Maheu	Angela Moore	Lucy Pisko	Philip Rouse	Philip Rouse	Dawn Soucier	
Jean-Francois Maison Bourdon	Carol Moore	Marina Pitsiladis	Francis Roy	Francis Roy	Michele Soucy	
Kerri Malcolm	Teresa Moore	Alice Podolak	Danielle Roy	Francis Roy	Salim Soued	
Deb Malcolm	Evelyne Moreau	Ariane Poissant	Jackie and Keith Rusby	Danielle Roy	South Shore Reading Council	
William Mallinson	John-Nicolas Morello	Mathieu Poissant	Juan Manuel Ruz Martinez	Jackie and Keith Rusby	Eric Sparling	
Emilie Maltais	John and Joyce Morgan	Isabelle Anne Poisson	Janet Ryding	Juan Manuel Ruz Martinez	Carol Spratt	
Anna Mancuso	Margaret Moritz	Dominic Poliquin	Deborah Sabean	Janet Ryding	Raj Srivastava	
Howard Mandelstam	Lorna Moroz	Kassandra Pollock	Stefanie Saganski	Deborah Sabean	Micheline St-Denis	
Dianne Mann	Marilyn Morton	Sarah Pomerleau	Lina Sakellaropoulos	Stefanie Saganski	Marie-Therese St-Onge	
Claudia Manseau	John and Susan Mulcahy	Louise Pomerleau	Ian Salathiel	Lina Sakellaropoulos	Lyne St-Pierre	
Gianna Manzerolle	Marlène Muller	Daniel Ponton	Carol Sales	Ian Salathiel	Violetta St. Clair	
Carmel and Michael Marchant	Joyce M. Murphy	Charles and Diane Pope	Catherine Sampson	Carol Sales	Marielle St. Germain	
Line Marcotte	Dian Murrell	Elizabeth Portman	Pierre Samuel	Catherine Sampson	Bruce and Judy Stamm	
Jade Marcoux	Samantha Nadjiwan	Mireille Poulin	Joanne Sanscartier	Pierre Samuel	Mary Jo and Bob Staniszewski	
Geneviève Marcoux	Jane Nakamura	Edwin Powell	Dr. Claude Sarrazin	Joanne Sanscartier	Marie-Therese St-Onge	
Diane and Syd Marcus	Elizabeth Nasimok	Rinetta Pranger	Leslie Sasaki	Dr. Claude Sarrazin	Lyne St-Pierre	
Melissa Mark	NAVS	Karen Pratte	Kelly Sattolo	Leslie Sasaki	Violetta St. Clair	
Mark Mark	Farah Naz Sheikh	Sylvain Pregent	Sophie Saulnier	Kelly Sattolo	Marielle St. Germain	
Carol Markiewicz	MS Nebout	Ross Price	Anne Saunders	Sophie Saulnier	Bruce and Judy Stamm	
Pamela Marsh	Elena Nebusova	Dodds Pringle	Katherine Sawdon	Anne Saunders	Mary Jo and Bob Staniszewski	
Walter Marshall	Maria-Teresa Necchi	Andrew Prior	Lisa and Theodore Schade	Katherine Sawdon	Micheline St-Denis	
Robin Marsicano	Tracey Neff	Helen Prior	Alice Scharf	Lisa and Theodore Schade	Marie-Therese St-Onge	
Nathalie Martel	Fay Neil	Natalie Pronovost	Eva Schell	Alice Scharf	Lyne St-Pierre	
Nadine Martel	Janice Neilson	Mathieu Provencher	Trine Schioldan	Eva Schell	Violetta St. Clair	
Patrick Martel	Nick Bollettieri Foundation Inc.	Betty Jean Putnam	Walter Schlegl	Trine Schioldan	Marielle St. Germain	
Linda Martens		Helena Pycior	Karl Schlicht	Walter Schlegl	Bruce and Judy Stamm	
Peter Martin		Laura Quinn	Elisabeth Schlittler	Karl Schlicht	Mary Jo and Bob Staniszewski	
				Elisabeth Schlittler	Marie-Therese St-Onge	
					Lyne St-Pierre	
					Violetta St. Clair	
					Marielle St. Germain	
					Bruce and Judy Stamm	
					Mary Jo and Bob Staniszewski	
					Marie-Therese St-Onge	
					Lyne St-Pierre	
					Violetta St. Clair	
					Marielle St. Germain	
					Bruce and Judy Stamm	
					Mary Jo and Bob Staniszewski	
					Marie-Therese St-Onge	
					Lyne St-Pierre	
					Violetta St. Clair	
					Marielle St. Germain	
					Bruce and Judy Stamm	
					Mary Jo and Bob Staniszewski	
					Marie-Therese St-Onge	
					Lyne St-Pierre	
					Violetta St. Clair	
					Marielle St. Germain	
					Bruce and Judy Stamm	
					Mary Jo and Bob Staniszewski	
					Marie-Therese St-Onge	
					Lyne St-Pierre	
					Violetta St. Clair	
					Marielle St. Germain	
					Bruce and Judy Stamm	
					Mary Jo and Bob Staniszewski	
					Marie-Therese St-Onge	
					Lyne St-Pierre	
					Violetta St. Clair	
					Marielle St. Germain	
					Bruce and Judy Stamm	
					Mary Jo and Bob Staniszewski	
					Marie-Therese St-Onge	
					Lyne St-Pierre	
					Violetta St. Clair	
					Marielle St. Germain	
					Bruce and Judy Stamm	
					Mary Jo and Bob Staniszewski	
					Marie-Therese St-Onge	
					Lyne St-Pierre	
					Violetta St. Clair	
					Marielle St. Germain	
					Bruce and Judy Stamm	
					Mary Jo and Bob Staniszewski	
					Marie-Therese St-Onge	
					Lyne St-Pierre	
					Violetta St. Clair	
					Marielle St. Germain	
					Bruce and Judy Stamm	
					Mary Jo and Bob Staniszewski	
					Marie-Therese St-Onge	
					Lyne St-Pierre	
					Violetta St. Clair	
					Marielle St. Germain	
					Bruce and Judy Stamm	
					Mary Jo and Bob Staniszewski	
					Marie-Therese St-Onge	
					Lyne St-Pierre	
					Violetta St. Clair	
					Marielle St. Germain	
					Bruce and Judy Stamm	
					Mary Jo and Bob Staniszewski	
					Marie-Therese St-Onge	
					Lyne St-Pierre	
					Violetta St. Clair	
					Marielle St. Germain	
					Bruce and Judy Stamm	
					Mary Jo and Bob Staniszewski	
					Marie-Therese St-Onge	
					Lyne St-Pierre	
					Violetta St. Clair	
					Marielle St. Germain	
					Bruce and Judy Stamm	
					Mary Jo and Bob Staniszewski	
					Marie-Therese St-Onge	
					Lyne St-Pierre	
					Violetta St. Clair	
					Marielle St. Germain	
					Bruce and Judy Stamm	
					Mary Jo and Bob Staniszewski	
					Marie-Therese St-Onge	
					Lyne St-Pierre	
					Violetta St. Clair	
					Marielle St. Germain	
					Bruce and Judy Stamm	
					Mary Jo and Bob Staniszewski	
					Marie-Therese St-Onge	
					Lyne St-Pierre	
					Violetta St. Clair	
					Marielle St. Germain	
					Bruce and Judy Stamm	
					Mary Jo and Bob Staniszewski	
					Marie-Therese St-Onge	
					Lyne St-Pierre	
					Violetta St. Clair	
					Marielle St. Germain	
					Bruce and Judy Stamm	
					Mary Jo and Bob Staniszewski	
					Marie-Therese St-Onge	
					Lyne St-Pierre	
					Violetta St. Clair	
					Marielle St. Germain	
					Bruce and Judy Stamm	
					Mary Jo and Bob Staniszewski	
					Marie-Therese St-Onge	
					Lyne St-Pierre	
					Violetta St. Clair	
					Marielle St. Germain	
					Bruce and Judy Stamm	
					Mary Jo and Bob Staniszewski	
					Marie-Therese St-Onge	
					Lyne St-Pierre	
					Violetta St. Clair	
					Marielle St. Germain	
					Bruce and Judy Stamm	
					Mary Jo and Bob Staniszewski	
					Marie-Therese St-Onge	
					Lyne St-Pierre	
					Violetta St. Clair	
					Marielle St. Germain	
					Bruce and Judy Stamm	
					Mary Jo and Bob Staniszewski	
					Marie-Therese St-Onge	
					Lyne St-Pierre	
					Violetta St. Clair	
					Marielle St. Germain	
					Bruce and Judy Stamm	
					Mary Jo and Bob Staniszewski	
					Marie-Therese St-Onge	
					Lyne St-Pierre	
					Violetta St. Clair	
					Marielle St. Germain	
					Bruce and Judy Stamm	
					Mary Jo and Bob Staniszewski	
					Marie-Therese	

Dissemination & Presentations

Davis, A. & Jensvold, M.L. (2017). The Effects of Conversational Partner Familiarity in Deaf Signers. In R. Louis (Ed.). *New Research on Sign Language* (pp. 83–104). Nova Science Publishers.

Jensvold, M.L. (2017). Ape Language. A. Fuentes (Ed.). *International Encyclopedia of Primatology*. Wiley. DOI: 10.1002/9781119179313.wbprim0462

Dombrowsky, K., Hings, C., Jensvold, M.L., & Shaw, H. (2017, April). Variability in Sign Use in Chimpanzees Before and After Relocation. Poster Presented at Rocky Mountain Psychological Association, Salt Lake City, UT. <https://osf.io/dngz6/>

Jensvold, M.L. (2017, April 7). Sign Language Studies Lead to Studies of Captive Chimpanzee Care. Gardner Memorial Lecture, Rocky Mountain Psychological Association, Salt Lake City, UT.

Jensvold, M.L. (2017, March 30). Chimpanzee of Fauna Foundation, Captive Wildlife and the Law Symposium, Vermont Law School, South Royalton, VT.

Jensvold, M.L. (2017, January). Friends of Washoe: Update on Tatu and Loulis and Their New Community. Presentation to Primate Awareness Network, Central Washington University.

Animal Law Panel, University of Dalhousie, Halifax, Nova Scotia. Student Animal Law Association. March 20, 2017

NAPSA Virtual Workshop: A Behavioral Taxonomy. Fauna Virtual Tour primatesanctuaries.org/workshop-2018



Laurence Interview

Media

Chimpanzés : des personnes? Clôde de Guise. April 19, 2017. *Covivia*, 13 (9).

City Life, MATv Montreal. Tanya Barr Interview, TVRS, Greater Montreal. Laurence Levesque Interview

Incursion on the Site of the Fauna Foundation, by Xavier Demer, *Le Journal de Chambly*, October 11, 2017

Property Donation

Fauna recently received about 100 acres of land that includes wetlands and young forest. The local laws require landowners to donate land to a nonprofit if they develop or use land for agriculture. We were the beneficiaries of a vineyard going in near us.

9 Ways to Donate to Fauna...



Adopt-a-Chimp



Amazon Wish List



Corporate Sponsorship



Donate Points



Everyday Items



Lifetime Care Fund



Sponsorship



Monthly Giving



Planned Giving

Learn more at FaunaFoundation.org



Arboretum



Young Chestnuts

Update on Tree Project

By Ken McAuslan

The coming season will see us continue our efforts to counteract the effects of several Asian scourges, introduced into North America over a number of years and which are ravaging our native tree species. More specifically we are

replacing our Red Ash trees, devastated by the Emerald Ash Borer, with Blue Ash from Southern Ontario as they are less susceptible to the problem. American Elm trees which have become victims of Dutch Elm Disease are being replaced with Chinese Lacebark Elm while our indigenous Butternuts (White Walnuts), under attack by Butternut Canker (a fungus), we are replacing with Buartnuts, a Butternut/Asian Walnut Hybrid which is resistant



Ken McAuslan

to the disease. Seeds of these replacement species have been collected and cleaned and are currently in cold storage to be planted in Spring. These are programs we began last year and they will be ongoing for years to come.

Last year we dramatically expanded our arboretum with many American species which we hope will survive the particularly low temperatures we've experienced this winter, fingers crossed, we'll know in the Spring. In addition we are also planning an agro-forest area (trees mixed with vegetable cultivation) in one of our arboretum fields to which we will also add about a dozen young hybrid hazelnut plants. This project will be in collaboration with our Fauna Gardening Team.

Our controlled Chinkapin Oak and Walnut forest is entering its third summer and again we are hoping that these more established plants will successfully deal with the difficult winter. Black Walnut is not indigenous to Quebec but we're hoping that the local provenance of our seed sources will stand us in good stead. This winter we will start pruning the Walnuts in order to guide their future growth, this must be done during the winter months while the plants are dormant so as not to harm them.

Finally we have further expanded our tree planting to a field on the south side of Bellerive road that is adjacent to our Conservation Area. The soil is good but like much of our land, it is extremely wet so we have planted species which don't mind "wet feet." Specifically we have planted Swamp White Oak (an indigenous but rare species in Quebec), American Sycamore which is a Southern Ontario import, and Yellow Birch which is Quebec's provincial tree. We planted some 75 trees in this field last Fall and we are again hoping for their survival in the face of the relative inclemency of the current winter.

Barn Restoration

In the conservation area we have restored a historic barn. It has two stories with space for events and activities such as yoga. We had our anniversary event and since then have linked electricity.

<i>Donor</i>	<i>In honor of</i>
Angela Barraclough	Husband David McCarthy
Maryse Bittar	Sister Patricia Bittar
Anna Bocsi	Jeff Shimizu & Kathy Bocsi
Bradbury Bonnie Johnstone	Oona Johnstone
Grant Buckler	Janet Burgess
Louise Burke	Karen Bradford
Jean-Pierre Corbeil	Mme Elisabeth Schlittler
Martha Cronyn	Mrs. Dalloway, Isolde, Apple Blossom, Orpheus, Fleur, Orlando, Orange cat, Heathcliff
Dani Althea	Theo
Andrea Fieldman	Jordan Fieldman
Elizabeth Gibbs	Tatu & Loulis
Kay Harvey	Erin O'Sullivan
Nancy Horton	Memory of Spock & the volunteer service of Derek Donelle
Belle Horwitz	Maureen McAllister-for Tatu & Loulis
Jenny Jellison	Loulis
Nicole Lantorno	Heather Patton
William Mallinson,	Andria Eysers
Kevin McAvoy	Taegan, Liam, Dane, and Ryan Mills
Margaret Milner	Lindsay Milner
Sally Mitchell	My sister Buzzy Mitchell and in memory of Spock
Teresa Moore	Anonymous
Jean Patton	Andrew Prior, one of your volunteers
Karen Pikoulas	Our dear friend Maureen
Alice Podolak	Virginia McCoy & Frank MacDonald
Mathieu Poissant	Ariane Poissant
Daniel Ponton	Lisa Drew
Ronald Shutler	Lesley Bobeldijk
Vincent, Marion & Brian Von Dehn	In honour of my father who passed away in November this year
Drogheda Woods	Sarah Parker & Dino Bellemare; Guy Parker & Julia Johnston; Leni Parker

<i>Donor</i>	<i>In memory of</i>
Margaret Black	Toby
Suzanne Brennan	Toby
Catherine Brodeur	Toby
Martina Brown	Toby
Melinda Cape	Toby
Debra Casperd	Jeannie, Theo, & Toby
Diane Cowan	John Birnbaum
Brenda Darby	John Birnbaum
Lynn Davidson	Toby
Lesley Day	Spock
Jennifer Dempsey	Spock
Celine Desjardins	Spock & Toby
Elizabeth Dietsch	Toby
Lisa Duncan	John Birnbaum
Susan Feeley	Spock & Toby
Thomas Gajewski	Washoe
Eileen Hennessy	Toby
Judith Henning	Spock
Ray Jantz	Toby
Patricia Kirkpatrick	Her late mother and to the Lifetime care fund
Denise Larsen	Toby
Bridget Macedonski	Toby, Spock and Theo
Gianna Manzerolle	Toby
Jessica Mas	Toby
Marie-Claude Monette	Toby
Deanna Parkes	Deborah Styger
Kassandra Pollock	Toby
Patti Ragan	Toby
Tony Rebelo	The best Black Lab, Gretzky, who loved all animals
Scott Requadt	Trautel Canute
Judith Roberts	Spock & Toby
Heather Robertson	John Birnbaum
Carol Sales	My late beautiful niece, Jane Lavallee
Michelle Seguin	John Birnbaum
Martha Sikaras	Toby
Mary Jo & Bob Staniszewski	Beverly Staniszewski
Michael Sultana	The chimps that have moved on to the next world.
Lynn Valenta	Toby
Mary Ventura	Toby
Rachel Weiss	Billy Jo
Lynn Wenman	Spock & Toby
Louise Wills	Toby



"Losing those you love affects you. It is buried inside of you and becomes this big, deep hole of ache. It doesn't magically go away, even when you stop officially mourning."

—Carrie Jones



Song Sparrow



Monarch



Argopie Aurantia



Snapping Turtle



White-tailed Deer



Sharp-shinned Hawk

Photos © Justin Taus

Please consider Fauna in your estate planning.

Specific Bequest: I give, devise and bequeath \$_____ (insert dollar amount or item of property to be donated) to the Fauna Foundation Quebec, a non-profit charity (886077239 RR 0001) located at 3802 ch Bellerive, Carignan, QC J3L 3P9.

Residuary Bequest: I give, devise and bequeath % _____ (insert % amount) of all the rest, residue and remainder of my estate to the Fauna Foundation Quebec., a non-profit charity (886077239 RR 0001) located at 3802 ch Bellerive, Carignan, QC J3L 3P9.





© NU Wight

Don't miss this year!

2018 Sanctuary Symposiums Dates

- May 27: *English*—this event is preceded by an optional morning Birdwatching
- June 10: *English*
- July 8: *English*
- July 15: *French*
- July 29: *English*—this event is followed by an optional afternoon workshop on Trees and Chimpanzee signs and artwork
- August 5: *French*
- September 9: *English*
- October 7: *French*

Stay Connected

-  Website: faunafoundation.org
-  Facebook: facebook.com/FaunaFoundation
-  Blog: faunachimps.tumblr.com
-  Instagram: instagram.com/fauna.foundation

FaunaFoundation.org
info@faunafoundation.org
3802 Bellerive
Carignan, Québec J3L 3P9
450-658-1844

